

# AUTOMATING CLIENT MANAGEMENT WITH HP



## HP Client Automation Standard Edition 7.8 software

HP Client Automation software solutions help you drive productivity, increase efficiency, and reduce IT costs.

### IT Concerns

- Are you continually being asked to do more with less but still achieve IT objectives?
- Do PC break/fix requests and ongoing client management consume way too much of your day and IT budget?
- Do you wish you had the ability to automate inventory of client devices on your network, track PC specific OS and applications-including usage?
- Is streamlining application deployment, patching and OS migration on your to-do list?
- Is improving security and compliance, and creating real-time status reports on your client fleet something you wish you could achieve now?

### HP Client Automation Benefits

With HP Client Automation you can improve the way you manage your PC fleet through its lifecycle: from deployment, to maintenance, to upgrade and migration, to retirement. The end result will be more reliable, secure and compliant hardware—at a lower total cost of ownership.

HP Client Automation serves a wide range of customers of differing levels of IT maturity, size and complexity—how can we help you manage your client environment better?



HP Client Automation (HPCA) Standard Edition software is an affordable, easy-to-use, and quick-to-deploy solution that addresses client management challenges head on:

- **Deployment and migration:** Migrate thousands of clients simultaneously to new applications or operating systems such as Windows® 7—quickly, efficiently, and reliably
- **Ease of installation:** Install and configure thousands of devices in minutes, all from a central web-based console
- **Quick time to value:** Leverage out-of-the-box functionality of HPCA for common use cases such as application installation, automated patch acquisition and distribution and enable users to download and install applications through self-service feature
- **Ease of administration:** Control management of client devices from a single, integrated Web-based console

## Features for all client devices

HPCA Standard Edition provides a full suite of management capabilities for both HP and other OEM client devices, including:

### Fully automated Windows 7 deployment and migration

- Systems can be fully deployed from “bare metal” or migrated to a new operating system without ever needing a desk-side visit
- Retains and migrates individual user settings and data to reduce user disruption
- Automatically preserves display settings, files, and preferences of all kinds, even across version upgrades

### Quick and easy installation and integration

- A simple installation process with components pre-configured for increased out-of-the-box capabilities
- Automatically discovers networked client devices through both network scanning and importing from LDAP-compliant directory services or flat files
- Utilizes management agents pre-installed on certain HP hardware
- Enables remote deployment of management agents to end-user devices

### Simplified task management

- Integrated, Web-based management console to perform common configuration and management tasks, including managing client hardware, software, and remote operations
- Wizard-driven, step-by-step processes for deploying operating systems, patches, software, and other management tasks
- Easy-to-use interface for creating reports, defining dynamic, inventory-based device groups, and configuring the management infrastructure

### Automated, continuous patch management

- Seamless acquisition and publication of Microsoft® Windows patches
- Dynamic reporting, showing which machines are non-compliant and at greatest risk
- Verifies compliance to assigned patch levels, reducing the risk of accidental removal, deletion, or corruption of patches

### Automated, flexible software distribution

Enables group-driven distribution of applications, content, and updates

- Provides both “push” and “pull” deployment options, enabling administrators to automatically deploy required software, while offering end-user the flexibility to install authorized software on their schedules
- Automatically completes jobs assigned to offline machines when network access is detected
- Supports deployment of MSI applications, HP Softpaqs, self-executing installation programs, and delivery of multiple files and folders

### Automated, Software Usage Monitoring, and Reporting

- Monitors application usage at the device level
- Tracks time application is open as well as actively in use
- Creates text and visual chart reports—can be used to meet compliance requirements
- Enables license compensation to be paid based on usage

## Unique features for HP client devices

While HPCA Standard Edition has many capabilities for both HP and non-HP client devices, customers who manage HP desktops and notebooks can take advantage of the following unique capabilities:

### Integrated alert monitoring

- Automatically flags disruptive occurrences for administrative action
- Includes reports to help pinpoint particular issues such as chassis intrusion or hardware component failures

### Automated driver and BIOS updates

- Compares to the latest updates available from HP on an ongoing basis to determine whether BIOS or driver updates are necessary
- Automatically acquires relevant Softpaqs for BIOS, device drivers, and applications

### Integration with HP ProtectTools

- Provides remote initialization of embedded TPM chips in HP hardware
- Integrates with HP ProtectTools software for security management

### Integration with HP Software Out-of-Band Management Console

- Support for managing PCs and notebooks equipped with Intel® vPro, AMT, and DASH Standard Solutions
- Enables remote management of PCs and notebooks irrespective of the OS or the power state of the machine

## Thin-client management

HPCA Standard Edition also includes full management capabilities for HP thin clients, including:

- Discovery and inventory
- Remotely install software and Softpaq updates
- Power management
- Capture and deploy images

These capabilities are available on all HP thin clients with the following operating systems:

- Windows CE 5.0 and 6.0
- Windows XP Embedded
- HP ThinConnect
- Debian Linux
- elinux

HP Client Automation Standard is an industry-leading management solution that enables IT organizations to automate management of hundreds to thousands or more client devices from an integrated Web-based console. HP also offers HP Client Automation Enterprise, a policy-based desired-state management solution that offers massive scalability to hundreds of thousands of devices, higher levels of automation, and tightly integrating into the broader HP Business Service Automation solution. No one can provide better management of HP hardware than HP Client Automation due to the high level of integration. HP Client Automation helps you drive productivity, increase efficiency, while reducing IT client management costs. Learn more about HP Client Automation at [hp.com/go/clientautomation](http://hp.com/go/clientautomation) and download a fully functional trial version and start automating management today.

## Management Server system requirements

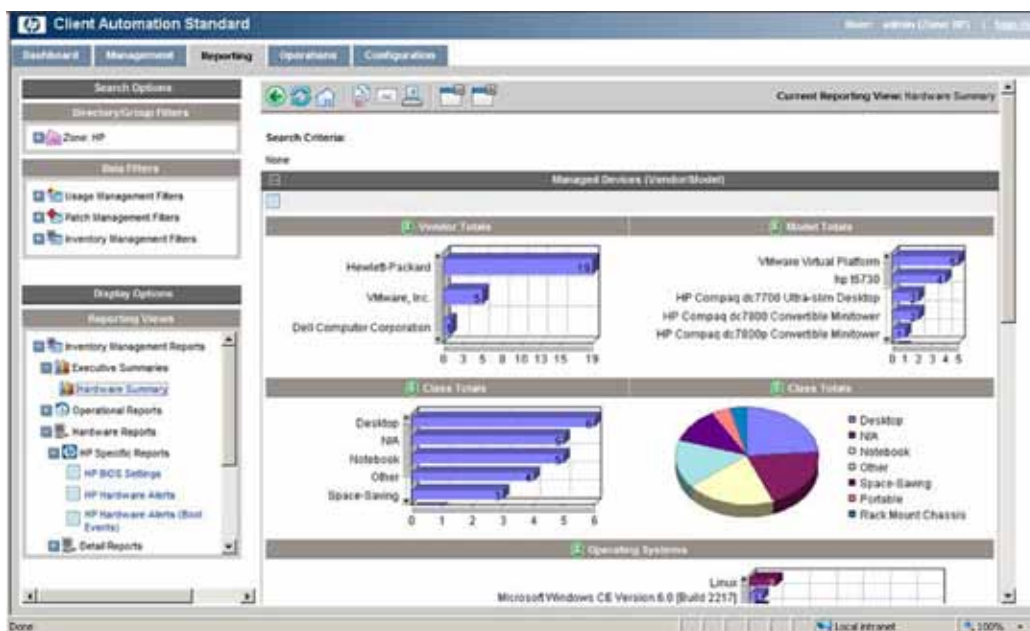
<b>Hardware</b>	Dedicated Microsoft Windows Server 2003 SP2 or Windows Server 2008, dual core, 2 GHz CPU, 4GB RAM
<b>Web browser</b>	Microsoft Internet Explorer 6 or higher
<b>Database</b>	Microsoft SQL Server 2005 or higher, mixed-mode authentication

## Target Client Device system requirements

<b>OS</b>	MS Windows XP, Vista, Windows 7, Windows 2003 Server, Windows 2008
<b>Thin client OS</b>	Windows WES, XPe, CE, HP ThinPro, Embedded Linux



To perform common configuration and management tasks or automatically deploy a new operating system, applications, or patches to a fleet of client devices, HP Client Automation uses a client-server architecture to communicate with agents that sit on the clients—all controlled from a single, integrated Web-based console.



Reduce operational costs and improve service quality by automating the discovery of networked client devices and the creation of reports. Define dynamic, inventory-based device groups to help configure the management infrastructure.

Share with colleagues



© Copyright 2010 Hewlett-Packard Development Company, L.P. The information contained herein is subject to change without notice. The only warranties for HP products and services are set forth in the express warranty statements accompanying such products and services. Nothing herein should be construed as constituting an additional warranty. HP shall not be liable for technical or editorial errors or omissions contained herein.

Microsoft and Windows are U.S. registered trademarks of Microsoft Corporation.

Intel is a trademark of Intel Corporation in the U.S. and other countries.

AMD is a trademark of Advanced Micro Devices, Inc.

4AA1-6856ENW, Created May 2010

