



HP APPLICATION LIFECYCLE INTELLIGENCE

Data sheet

Introduction

HP Application Lifecycle Intelligence (ALI) provides an action-oriented decision support system that's embedded in HP Application Lifecycle Management (ALM) software. This innovative technology aggregates information from diverse resources to establish complete ALM traceability.

Overview

Under the constant pressure to compete, businesses of all sizes are driven to pursue growth—a pursuit that hinges upon innovating faster than competitors while controlling costs, managing risks, and maintaining agility. High-quality applications make it

possible to meet these business objectives, but development managers and quality assurance (QA) managers are finding it increasingly challenging to deliver modern applications.

In fact, a range of obstacles to rapid application delivery has emerged across a number of fronts. For example, enterprises that experience acquisitions or mergers can suddenly be burdened with bloated portfolios of overlapping applications and development tools, or conflicting business processes. Outsourcing can also present challenges, including inefficient work streams, poor collaboration, and unmanaged changes resulting in software defects.

Another obstacle that increases complexity in delivering applications results from distributed development teams that may be working with a variety of systems and technologies. As these teams build composite applications with their independent toolsets, the result is a lack of visibility and traceability for stakeholders as they engage in their work across the application lifecycle.

HP ALI, an extension of HP ALM, is designed to address the complexity and resulting obstacles of modern application delivery, providing users—across distributed teams—with real-time change impact analysis and risk assessment.



THE AGE OF APPLICATION ADVERSITY

- **Lack of a decision support system**—Without a single system of record to assess the impact of changes and development and quality risks associated with application delivery, stakeholders lack visibility to drive corrective actions. Consequently, outcomes are difficult to predict and defects are difficult to discover prior to production release.
- **Insufficient end-to-end traceability**—Many ALM and application delivery tools report on either high-level summaries or low-level details. Some tools report on both, but only if all information is stored on one platform. HP ALI not only delivers on both levels, but also addresses the fact that modern applications are composite. HP ALI meets the challenge of end-to-end traceability across multiple projects, technologies, and platforms.
- **Conflicting stakeholder priorities and activities**—Developers write code. Testers validate the code. But without visibility into the performance of these tasks, development managers may not be certain that developers are working toward the right objectives and priorities. Nor can QA managers know if all code changes are being tested.
- **Lack of real-time change impact and risk assessment**—Without a single system of record, it's challenging to make associations between projects, milestones, requirements, tests, defects, source code, and releases.
- **Application changes made without testing**—Defects discovered in production are far more costly to fix than defects discovered during development. HP ALI reduces business risk and lowers the cost of application delivery and maintenance; it identifies changes that could result in defects and assesses risk associated with code changes and how they relate to requirements and test coverage.

How HP ALI powers HP ALM

HP ALI, an open integration framework, enhances HP ALM by aggregating data from a variety of sources. With data aggregation, decision makers—such as QA engineers, development managers, and project managers—gain access to meaningful information and visibility into the potential risks of change in application projects:

Gain freedom for developers.

Acquisitions, mergers, and outsourcing can pile up development tools in an enterprise. But it's impractical and financially prohibitive to consolidate these resources. HP ALI with HP ALM provides an open integration framework to support both open source and commercial tools. The outcome is end-to-end traceability and comprehensive risk assessment, with freedom of choice for development tools.

Monitor source code changes.

If quality assurance teams are unaware of when developers change source code, those changes can make it into production without testing. If the untested code introduces defects, then business and IT operations are at risk. HP ALI equips HP ALM with the ability to monitor source code changes, flag untested changes, report if a defect is linked to a code change, and warn if a code change is not related to a business requirement.

Accelerate application delivery.

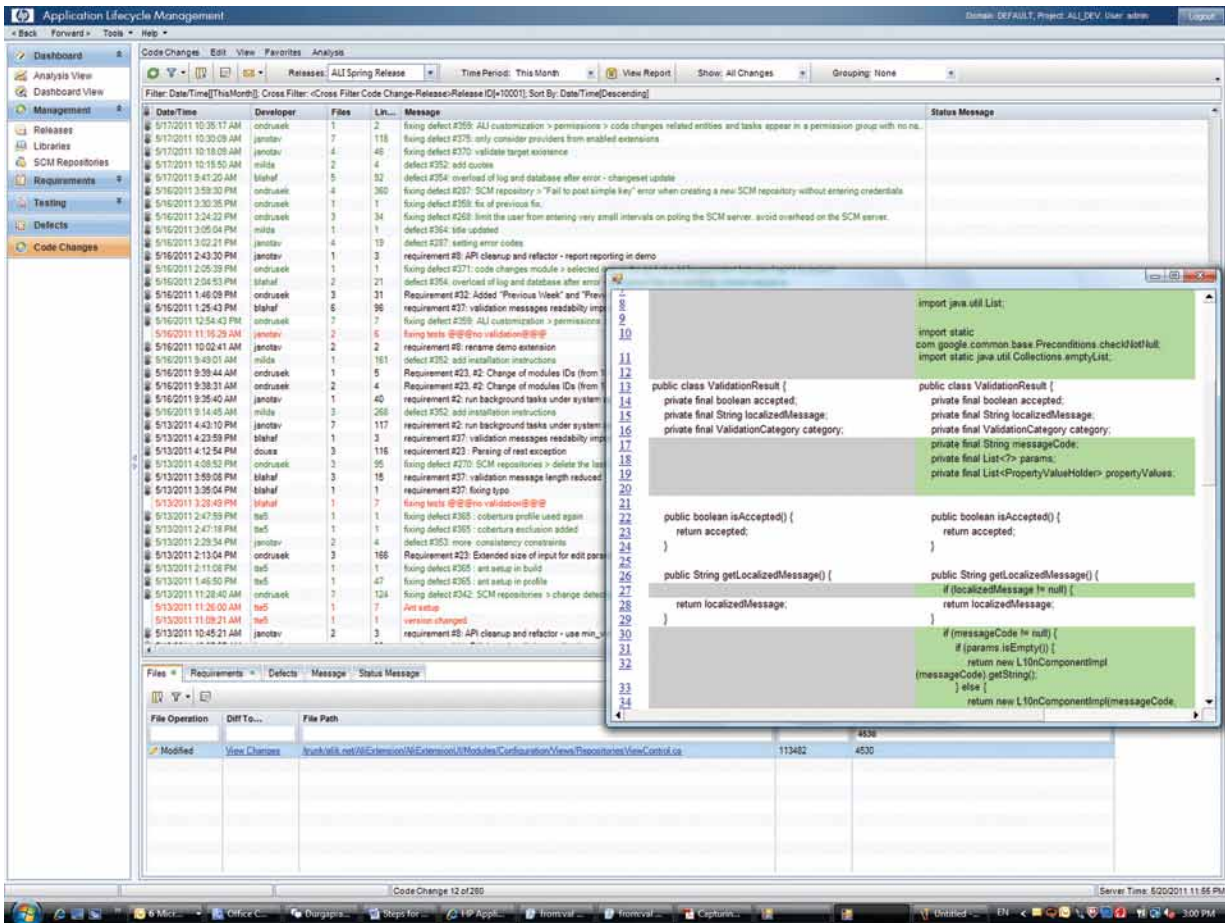
Composite applications are the architectural standard in application modernization, as distributed development teams work with varying tools and systems on shared services and application components. The combination of composite application architecture and distributed teams can act as a drag on application delivery. With HP ALM powered by HP ALI and combined with the HP Agile

Accelerator, teams can work in an Agile environment; stakeholders benefit from innovative features such as task boards to manage work items and iteration visibility through traceability, from user story to source code development to testing and defect management. With visibility across projects and platforms, the potential for rework is reduced and work is accelerated through efficient collaboration.

HP ALI in action

HP ALI powers HP ALM to aggregate data from different sources, providing for traceability and actionable information.

Figure 1
The HP ALI code changes module linking source code to HP ALM artifacts



A closer look at HP ALI

Key features of HP ALI:

- Open SDK and hot-pluggable framework
- Rich partner eco-system
- Technology- and platform-agnostic integrations
- Support for Subversion, CVS, and Microsoft® Team Foundation Server
- Dynamic traceability reports with drill-down capability

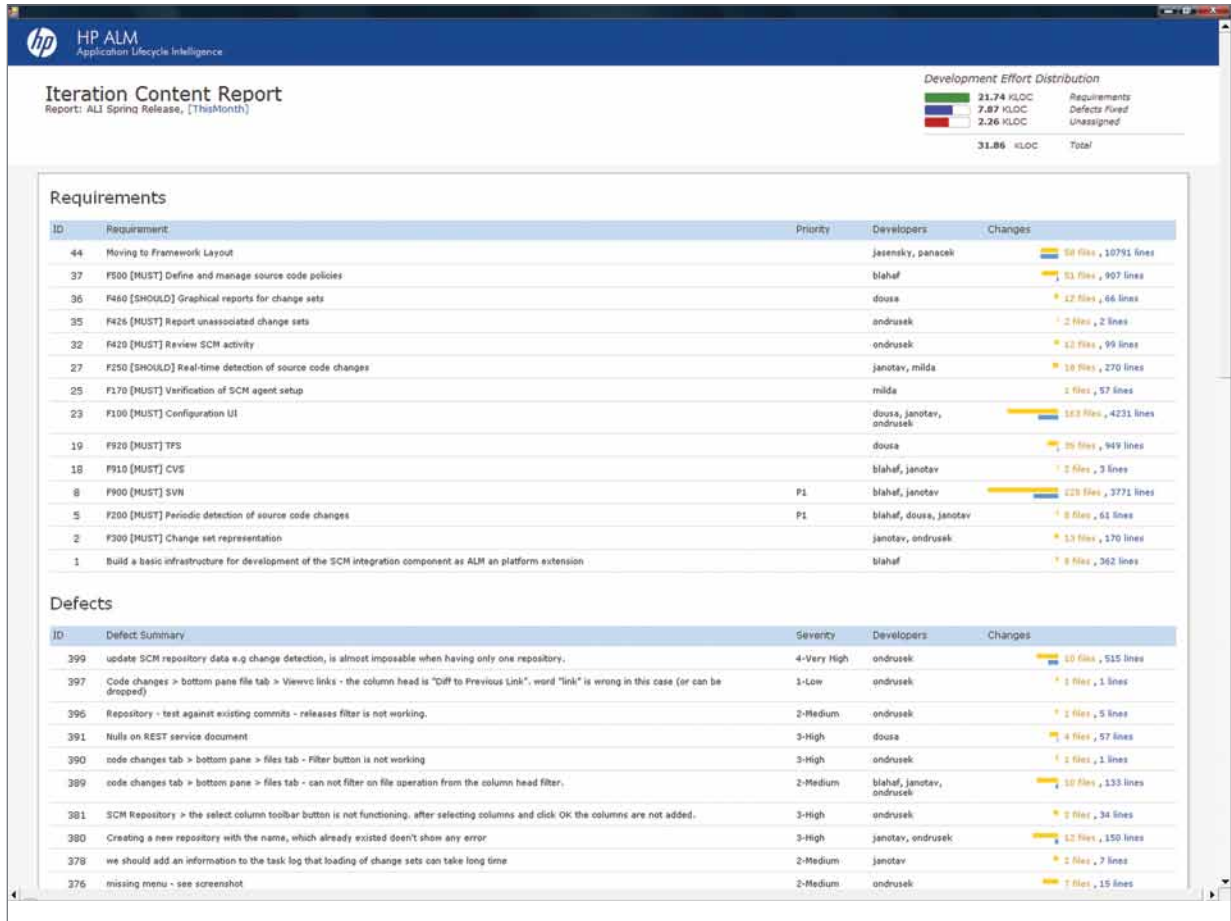
- Real-time change impact analysis
- Actionable information to HP ALM stakeholders

Key benefits of HP ALI:

- Improve application quality by identifying and fixing defects during development.
- Improve business predictability by monitoring impact of source code changes.
- Get investment protection by enabling freedom of choice for development tools and technologies.

- Accelerate modern application delivery through cross-project and cross-platform visibility.
- Assess change impact with traceability between application artifacts.
- Link application artifacts by value or by reference through integration.

Figure 2
HP ALI traceability report in HP ALM



Supported platforms and versions:

HP ALI works only as an add-on to HP ALM 11.0 and does not work with HP Quality Center, or other software management platforms.

Download HP ALI at <http://update.external.hp.com/qualitycenter/qc110/index.html>.

For more information

Learn more about HP Application Lifecycle Management at www.hp.com/go/alm.

 **Get connected**
www.hp.com/go/getconnected

Current HP driver, support, and security alerts delivered directly to your desktop

 Share with colleagues

© Copyright 2011 Hewlett-Packard Development Company, L.P. The information contained herein is subject to change without notice. The only warranties for HP products and services are set forth in the express warranty statements accompanying such products and services. Nothing herein should be construed as constituting an additional warranty. HP shall not be liable for technical or editorial errors or omissions contained herein.

Microsoft is a U.S. registered trademark of Microsoft Corporation.

4AA3-4670ENW, Created June 2011

